

FREEHOLD



Flat

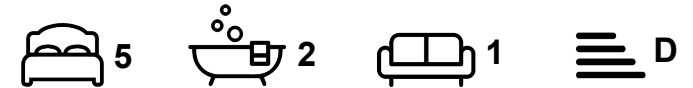
FLAT C FIRST FLOOR, 27 COWANE STREET, STIRLING, FK8 1JW

Offers over

£180,000

FEATURES

- HMO licensed property
- Close to Stirling University and City Centre
- Excellent amenities
- Spacious Living and Kitchen Area
- Five bedrooms in Stirling City Centre
- Prime Location
- Large Bedrooms
- Freshly decorated



5 Bedroom Flat located in Stirling

Call us on

01786 463 525

office@goldentree.online

www.goldentree.online

Council Tax Band

B

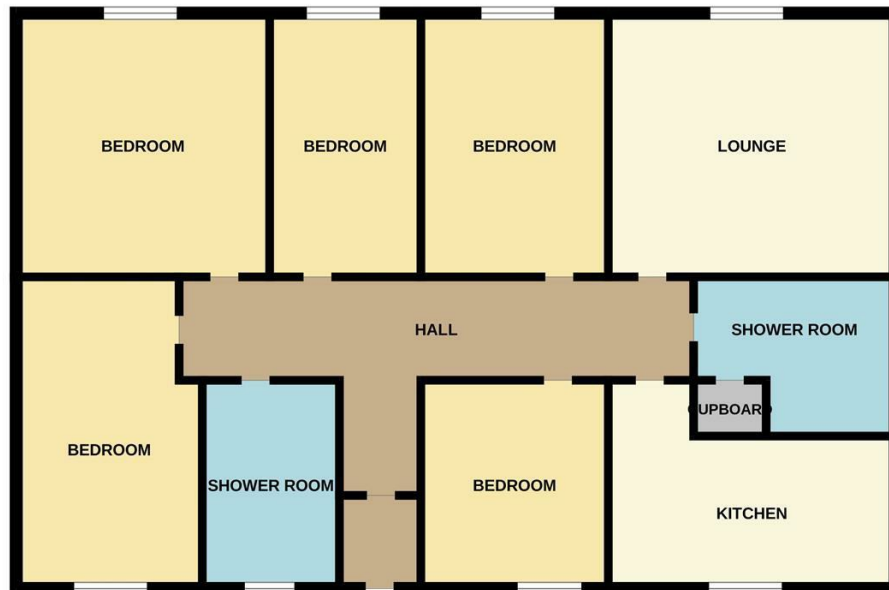
Nestled in the heart of Stirling, this impressive five-bedroom flat on Cowane Street offers a unique opportunity for both investors and families alike. Spanning an ample 1,077 square feet, this property boasts a spacious living room, perfect for relaxation and entertaining. With two well-appointed bathrooms, the flat provides convenience for larger households or those seeking to accommodate guests.

The location is truly exceptional, situated in the incredibly central Stirling city centre. Residents will enjoy easy access to excellent transport links, making commuting a breeze. Additionally, the flat is in close proximity to the renowned University of Stirling and the historic Stirling Castle, enriching the local experience with culture and education.

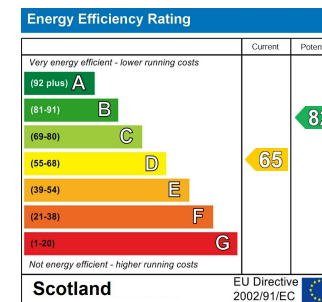
Having been used as a House in Multiple Occupation (HMO) for the past 20 years, this property has a proven track record of rental success, making it an attractive option for investors looking to expand their portfolio. The flat's versatile layout and prime location ensure it will appeal to a wide range of potential tenants or buyers.

In summary, this five-bedroom flat on Cowane Street is a rare find in a vibrant area, offering both comfort and convenience. Whether you are looking to invest or seeking a spacious home in the heart of Stirling, this property is well worth your consideration.

GROUND FLOOR
1033 sq.ft. (96.0 sq.m.) approx.



TOTAL FLOOR AREA : 1033 sq.ft. (96.0 sq.m.) approx.
Whilst every attempt has been made to ensure the accuracy of the floorplan contained here, measurements of doors, windows, rooms and any other items are approximate and no responsibility is taken for any error, omission or mis-statement. This plan is for illustrative purposes only and should be used as such by any prospective purchaser. The services, systems and appliances shown have not been tested and no guarantee as to their operability or efficiency can be given.
Made with Metropix ©2026



Agents Note: Whilst every care has been taken to prepare these particulars, they are for guidance purposes only. All measurements are approximate and are for general guidance purposes only and whilst every care has been taken to ensure their accuracy, they should not be relied upon and potential buyers are advised to recheck the measurements.

